



3M™ Wireless Communication System Model XT-1 Technical Data - #132

Setting up communication via 3M™ Wireless Communication System Model XT-1 Base Station Web Server

Overview:

The 3M™ Wireless Communication System Model XT-1 Base Station can function as a web server, which means it can be configured using a PC. The web-server functionality is disabled on a new 3M™ Wireless Communication System Model XT-1 Base Station, so it must be enabled and configured on site.

The steps below detail this process.

1. Set up web-server functionality on 3M™ Wireless Communication System Model XT-1 Base Station.

1. Connect the 3M™ Wireless Communication System Model XT-1 Base Station:

Peer-to-Peer – a direct connection between the 3M™ Wireless Communication System Model XT-1 Base Station and the PC using a RJ45 Ethernet cable

2. Enter the Configuration mode..

Configuration mode is a passcode-protected area that contains most of the configuration options for the 3M™ Wireless Communication System Model XT-1 Base Station system. Using the access provided for users it is possible to set up all of the functionality of the system.

To enter the configuration mode:

1. From the Run mode menu, press and hold Mode.
2. While continuing to hold Mode, enter your user passcode.
3. Release Mode. The display will show the user name and ID number
(e.g., Installer1ID = 1 or User1ID = 1)
4. Press Mode 3 times to get to System Menu

Notes:

The default Installer password is 12345 and the default User password is 1234

3. Select **16 Network Setup**.

4. By default, the 3M™ Wireless Communication System Model XT-1 Base Station has the following values for:

IP Address:	192.168.99.2
Subnet Mask:	255.255.255.0
Default Gateway:	192.168.99.1

Note: Some stores may have installed the XT-1 on an existing network and hence changed the IP address on the 3M™ Wireless Communication System Model XT-1 Base Station.

5. Change the value for **WEB server enabled** to **Yes** (if it is currently set to No)



6. Now on your PC, try Pinging IP addresses (relative to the 3M™ Wireless Communication System Model XT-1 Base Station's IP Address) until you get an IP address that cannot be pinged.

See **Pinging an IP Address** on Page 4.

For the sake of this instruction manual, let us assume 192.168.99.3 was the IP Address you could not successfully ping.

7. Set your PC network configuration as such:

IP Address: 192.168.99.3
Subnet Mask: 255.255.255.0
Default Gateway: 192.168.99.1

8. Ensure the value for **WEB server enabled** to **Yes** (if it has changed to No)

9. Press the Mode key once to get back to the System Menu

10. Unplug & Repower Basestation

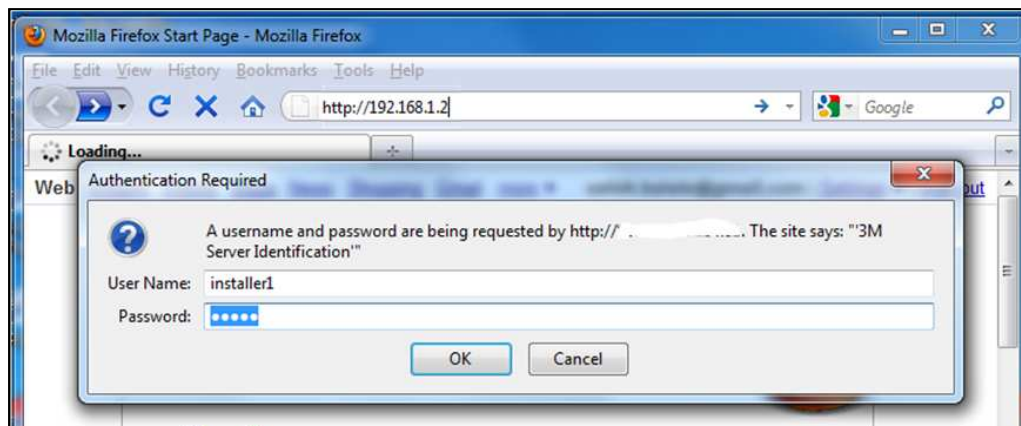
2. Log-on to the 3M™ Wireless Communication System Model XT-1 Base Station with a PC

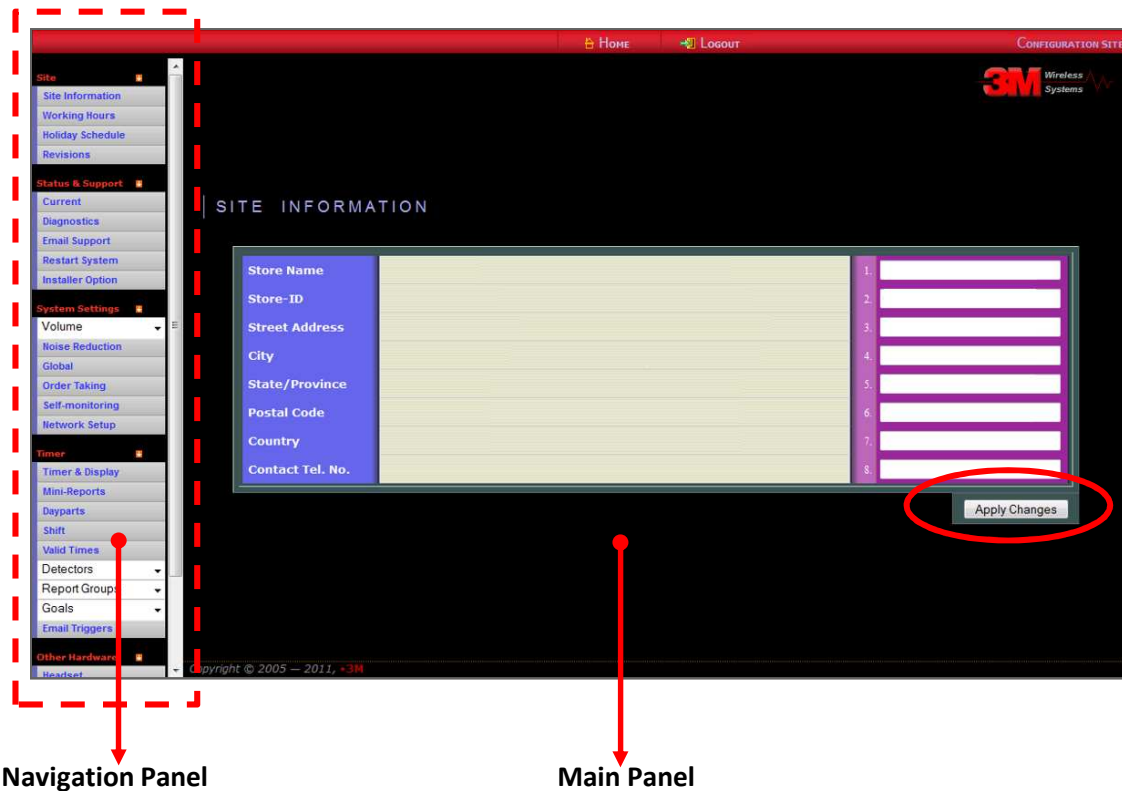
Once the 3M™ Wireless Communication System Model XT-1 Base Station and PC have been connected and configured, you can log into the 3M™ Wireless Communication System Model XT-1 Base Station from the PC and operate the station as you would from the local interface.

Note: You can log into the 3M™ Wireless Communication System Model XT-1 Base Station as an Installer or a User

To log into the 3M™ Wireless Communication System Model XT-1 Base Station:

1. Using a web browser, type in the IP address of the 3M™ Wireless Communication System Model XT-1 Base Station in the browser's Address bar, then press **Enter**
2. Type in your user name and password, then press **Enter**
 - * The default account for an installer is "Installer1"; the default password is "12345"
 - * The default account for a user "user1"; the default password is "1234"
 - * Do NOT type a space between Installer and the user number (e.g. Type "Installer5" instead of "Installer 5")





Navigation Panel

Main Panel

3. Your web browser will now present the 3M™ Wireless Communication System Model XT-1 Base Station web page.
4. Use the Navigation Panel on the left of the screen to open their related configuration fields in the main panel.
5. Ensure the system saves your changes to the settings on the main panel by clicking on the “Apply Changes” button

Pinging an IP Address.

1. On your computer, Click **Start**, click **Run**, type **cmd**, and then press ENTER

Note: The steps may vary between Windows or other Operating Systems.

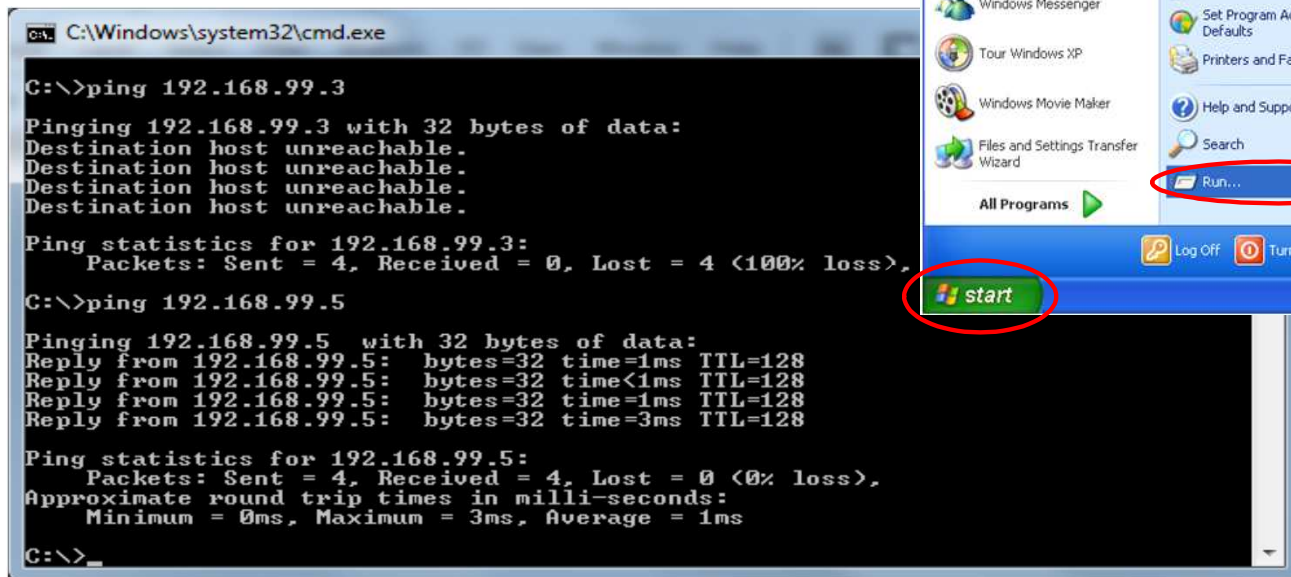
Consult your IT person on how to access Ping on these Operating Systems.

2. In the Command screen, type in ping the IP Address **192.168.99.xxx**

(When entering IP Address to ping, use one digit up or down in last position ie. given xx2 use xx1 or xx3)

Note: The xxx represents a number.

Then press ENTER



3. If the Ping returns a “Destination host unreachable”, you may set your computer’s IP address to this IP address.

Note: Consult your IT person on how to set your computer’s IP address

4. If the ping returns a valid reply, it means there is another device on the network that is configured with this IP address, and setting your computer to this IP address will create a conflict.

At this point you may want to try a different IP address – change the last 3 digits and execute step2 above.

Technical Information: The technical information, recommendations and other statements contained in this document are based upon tests or experience that 3M believes are reliable, but the accuracy or completeness of such information is not guaranteed.

Product Use: Many factors beyond 3M's control and uniquely within user's knowledge and control can affect the use and performance of a 3M product in a particular application. Given the variety of factors that can affect the use and performance of a 3M product, user is solely responsible for evaluating the 3M product and determining whether it is fit for user's particular purpose and suitable for user's method of application.

Warranty, Limited Remedy, and Disclaimer: 3M warrants that its intercom products will be free from defects in material and manufacture for the period indicated in product literature from the date of shipment to purchaser by 3M or its authorized dealer. 3M MAKES NO OTHER EXPRESS OR IMPLIED WARRANTIES, INCLUDING ANY IMPLIED WARRANTY OF MERCHANTABILITY OR FITNESS FOR A PARTICULAR PURPOSE. If the 3M intercom product does not conform to this warranty, the sole and exclusive remedy is, at 3M's option, repair or replacement of the 3M product or refund of the purchase price. This warranty does not cover: (1) the cost of shipping products to or from 3M for repair, (2) repair or replacement of existing cable or wiring, (3) product failure caused by misuse, abuse, improper installation, or unapproved modifications, or (4) intercom products that are installed or serviced by a non-3M authorized party. To obtain warranty service, please contact your authorized 3M dealer or 3M Building & Commercial Services Division, 3M Center, Building 500-01-01, St. Paul, Minnesota 55144-1000.

Limitation of Liability: Except where prohibited by law, 3M will not be liable for any loss or damage arising from its intercom products, whether direct, indirect, special, incidental or consequential, regardless of the legal theory asserted.



Building and Commercial Services Division

3M Center, Building 223-2N-21
St. Paul, MN 55144-1000
USA
www.3M.com/XT1

Contact your local dealer or 3M to learn more about how we can improve your business.
www.3M.com/XT1

3M is a trademark of 3M. Used under license in Canada
Please recycle. Printed in USA.
© 3M 2012. All rights reserved.
70-XXXX-XXXX-X